



Istruzioni di Montaggio *Assembly Instructions*



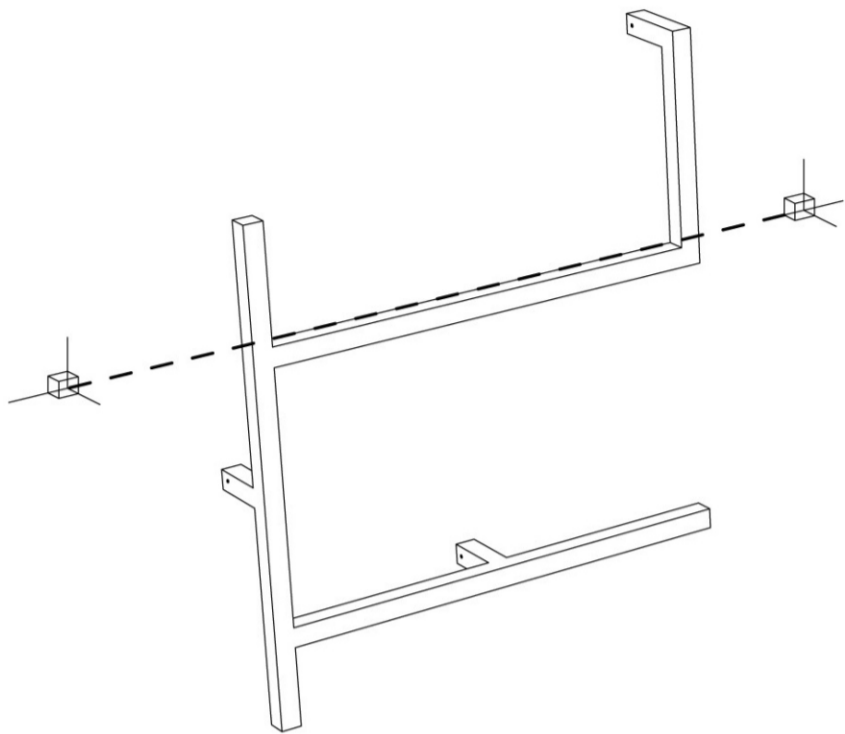
ANTOLOGIA libreria a parete_ *wall bookshelves*

Designer:	Studio 14
Anno Year:	2013
Materiale Materials:	metallo verniciato iron
Varie Additional:	solo per uso interno indoor use only

MODULI | *MODULES: A B C F G*

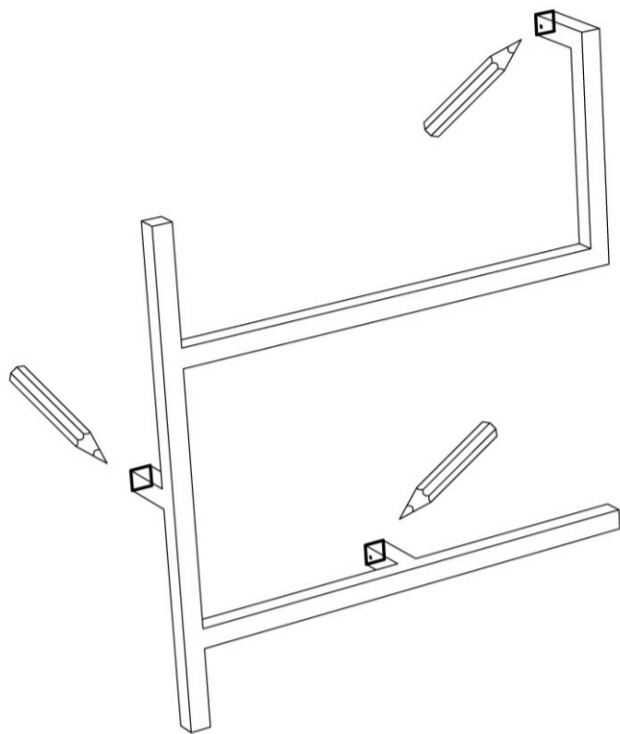
.1

Appoggiare il modulo al muro e metterlo in bolla affinché siaparallelo al terreno.
Accost the module on the wall in the chosen position and level it up to make it parallel to the floor.



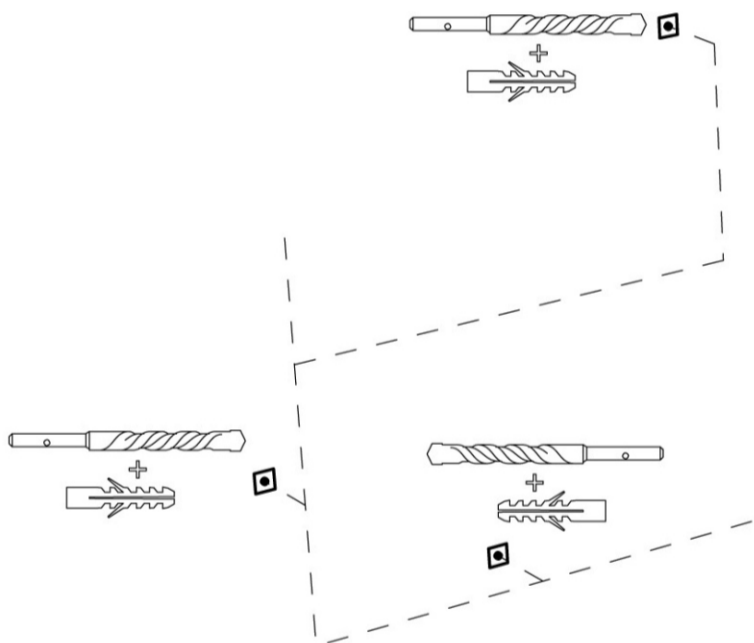
.2

Segnare i riferimenti di posizionamento sul muro.
Mark the references on the wall.



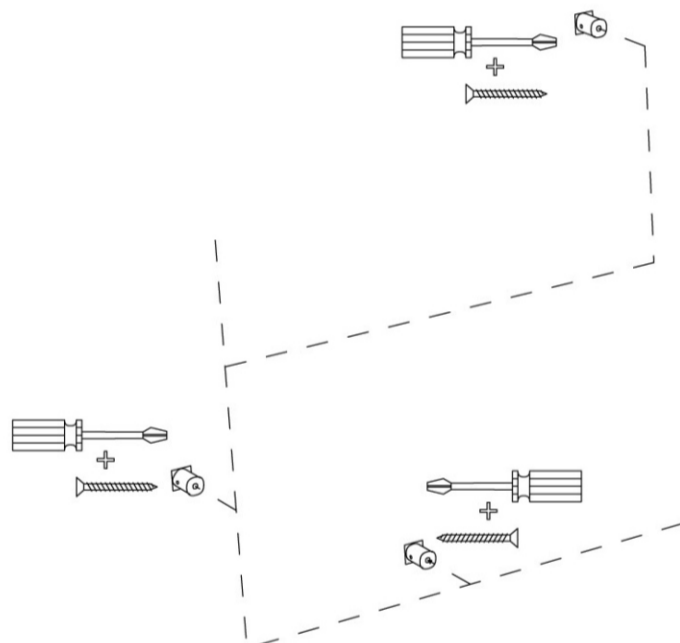
.3

Forare il muro con trapano al centro dei riferimenti e inserire I tassello nel muro
Drill the wall in the center of the references and insert the plug into the holes.



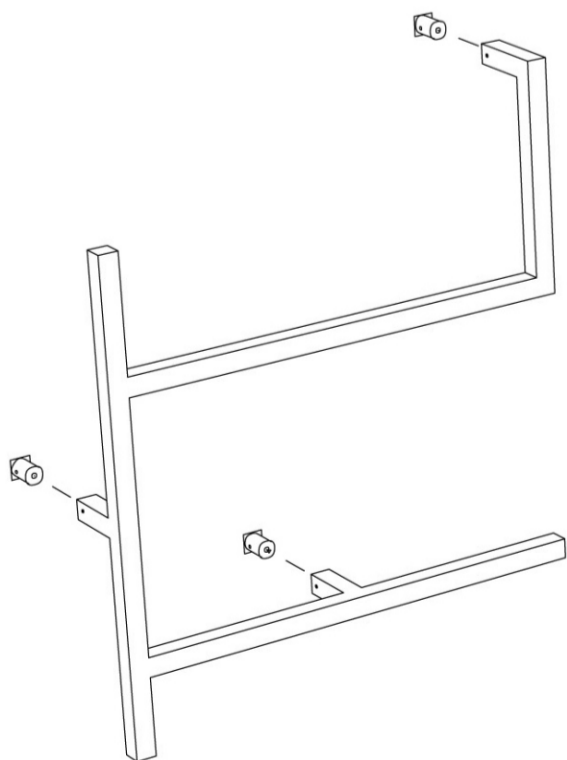
.4

Avvitare i supporti a muro.
Screw the supports to the wall.



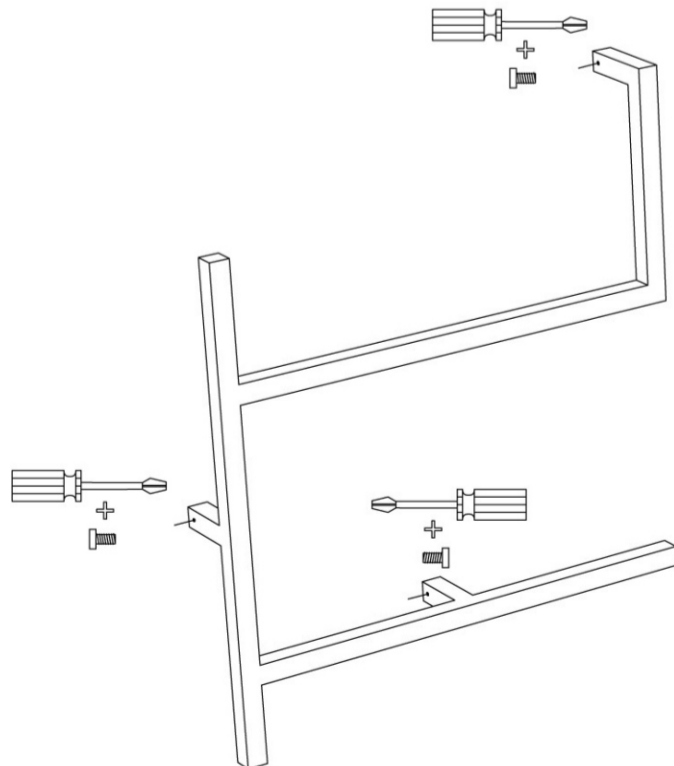
.5

Inserire il modulo della libreria nei supporti a muro.
Insert the module into the wall-supports.



.6

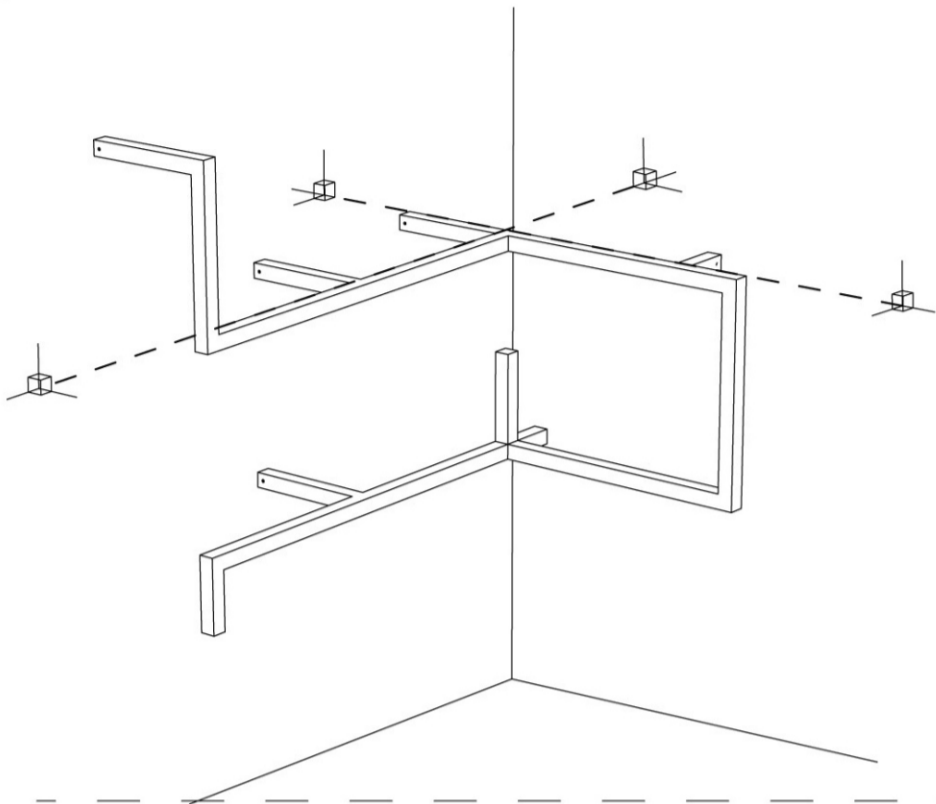
Avvitare i grani di bloccaggio.
Screw the locking grains and fix the module.



MODULO | *MODULE: D*

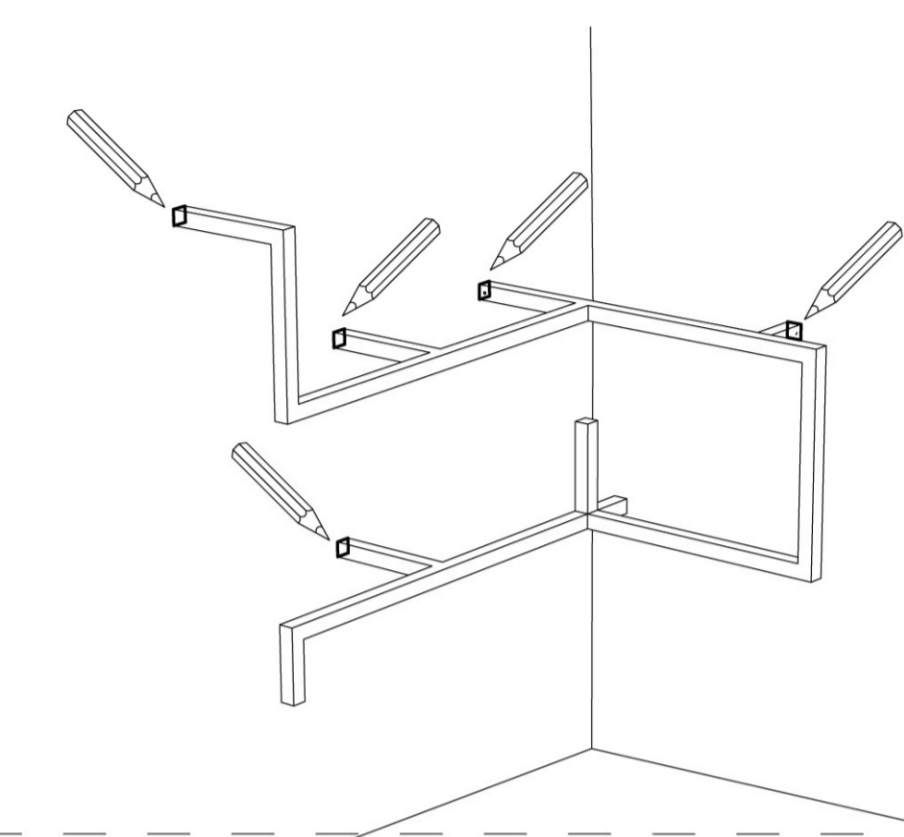
.1

Appoggiare il modulo al muro e metterlo in bolla affinché siaparallelo al terreno.
Accost the module on the wall in the chosen position and level it up to make it parallel to the floor.



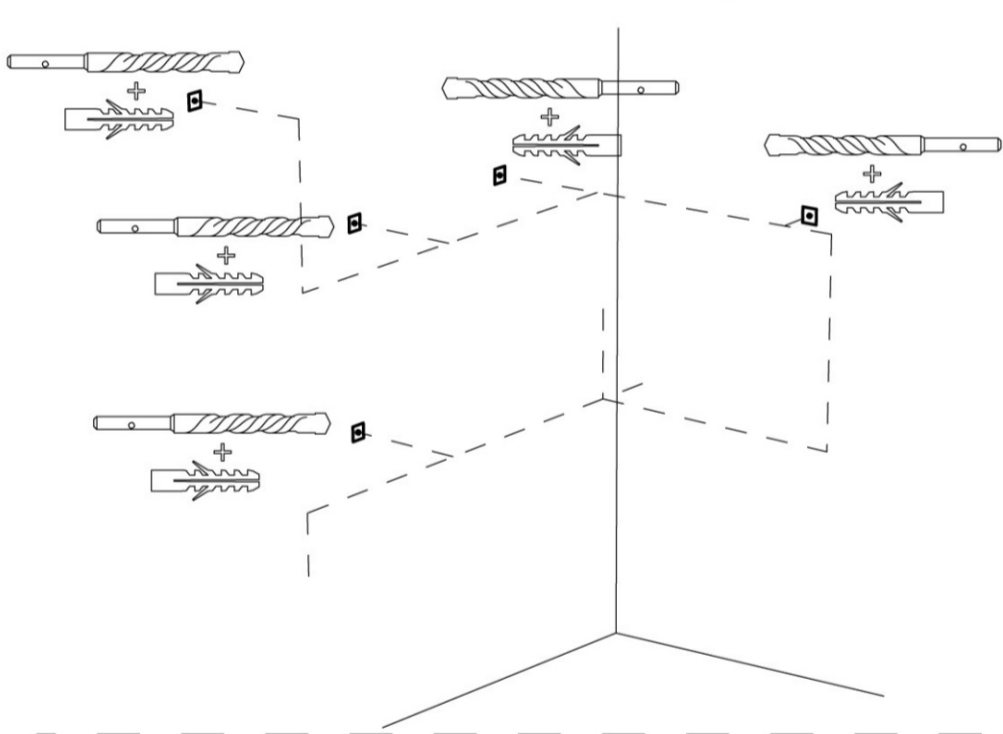
.2

Segnare i riferimenti di posizionamento sul muro.
Mark the references on the wall.



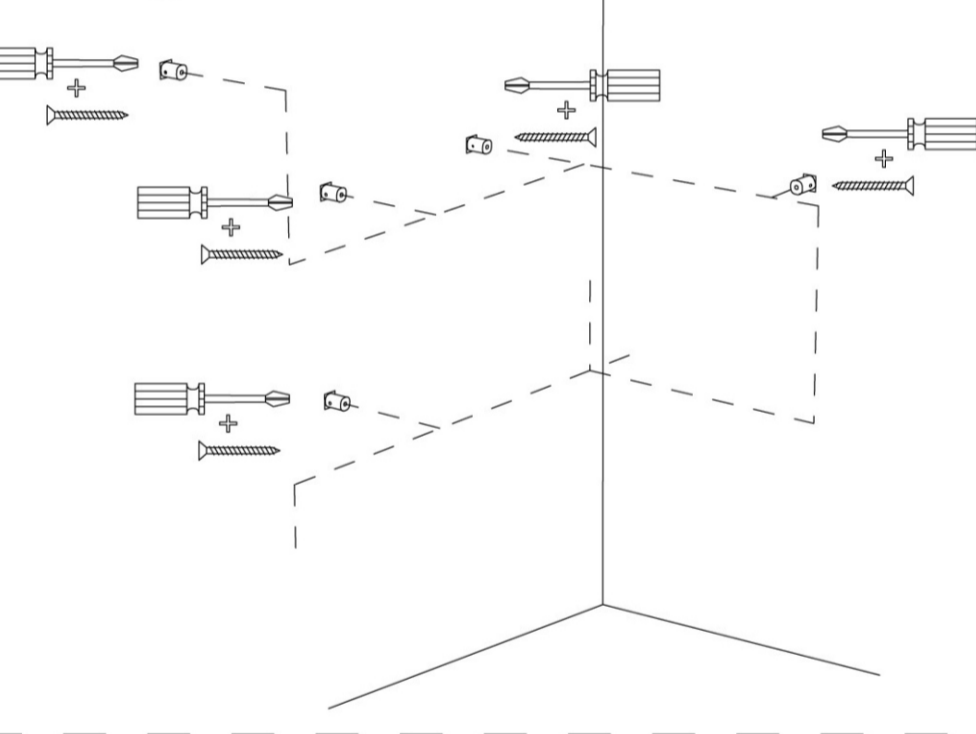
.3

Forare il muro con trapano al centro dei riferimenti e inserire I tassello nel muro
Drill the wall in the center of the references and insert the plug into the holes.



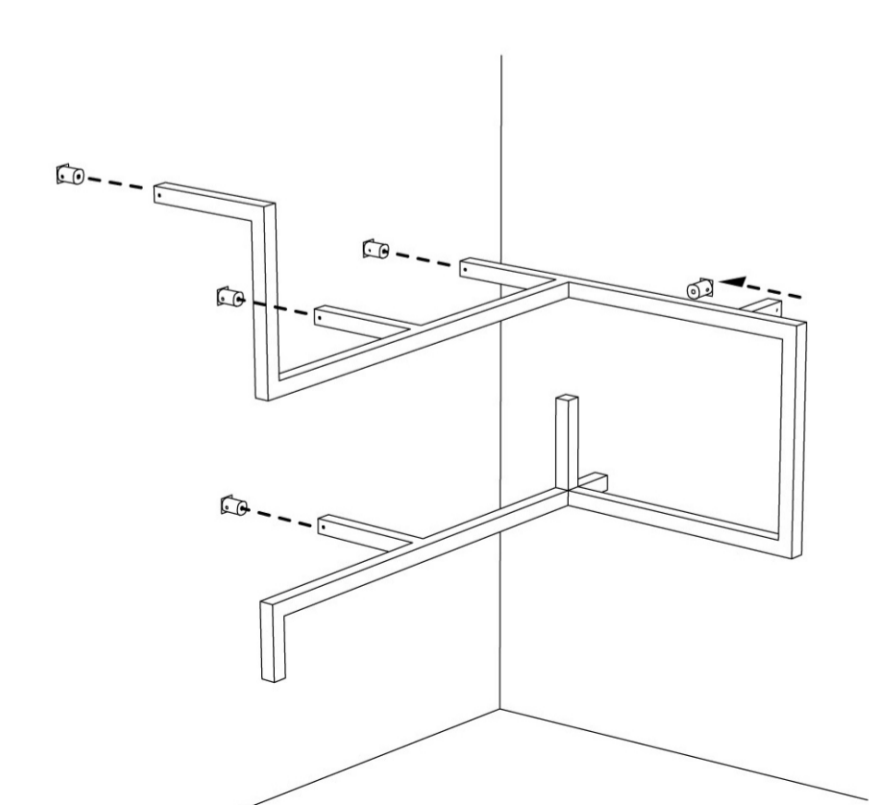
.4

Avvitare i supporti a muro.
Screw the supports to the wall.



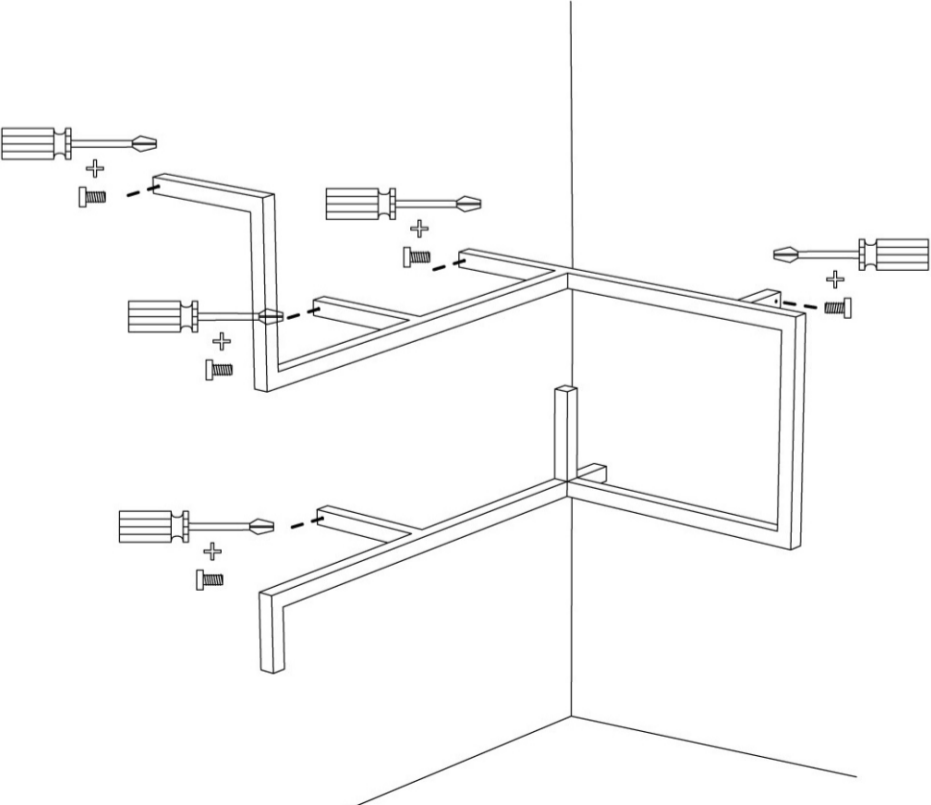
.5

Inserire il modulo della libreria nei supporti a muro.
Insert the module into the wall-supports.



.6

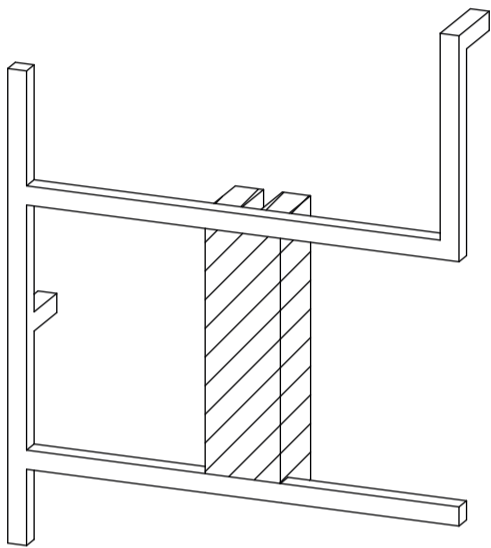
Avvitare i grani di bloccaggio.
Screw the locking grains and fix the module.



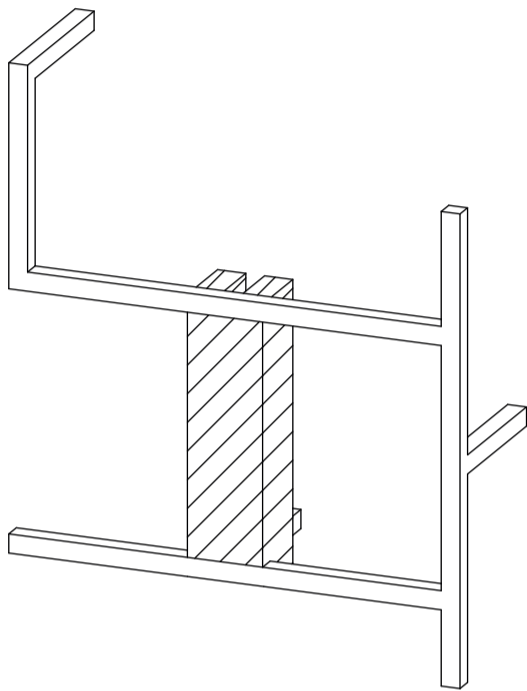
DISTANZIATORE IN POLISTIROLO | *SPACER IN POLYSTYRENE*

.1
Non rimuovere il distanziatore in polistirolo fino a montaggio effettuato
Do not remove the spacer in polystyrene before finish the installation

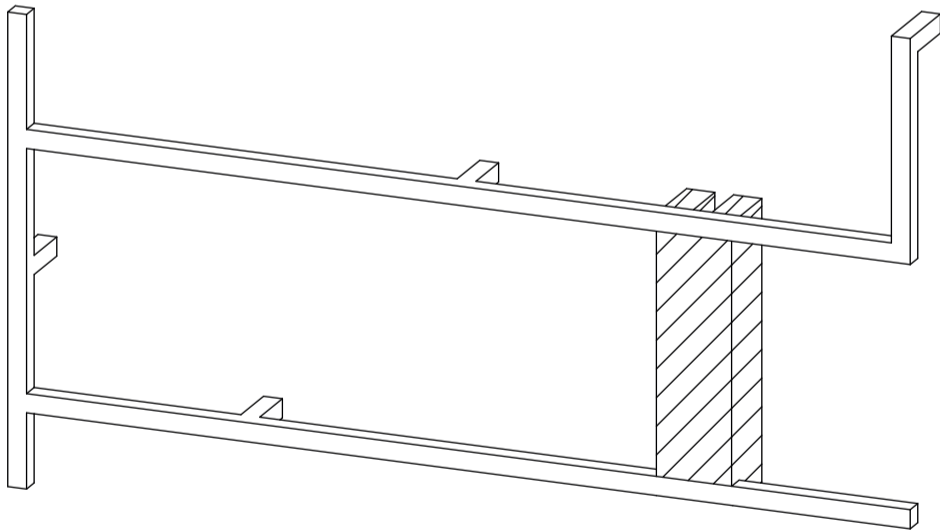
.2
A montaggio effettuato rompere il distanziatore quindi rimuoverlo
Once finished the installation, break and remove the spacer in polystyrene



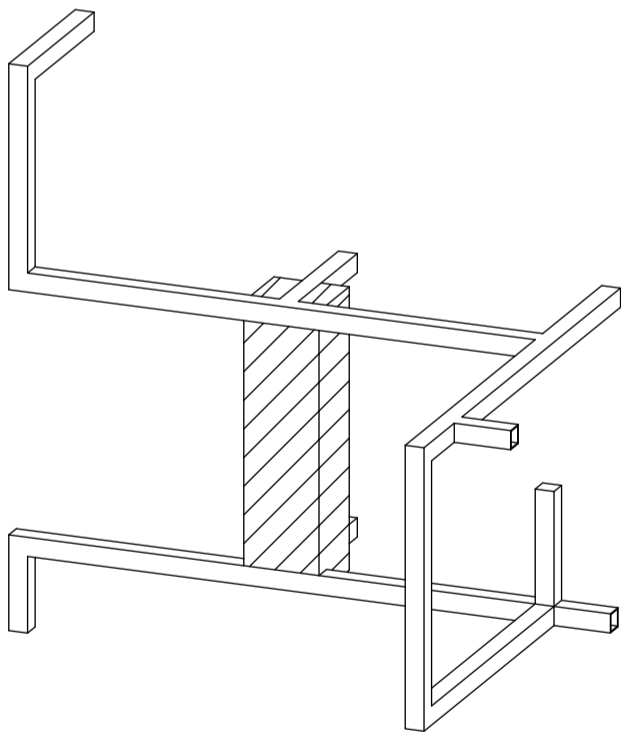
MOD. A



MOD. B



MOD. C



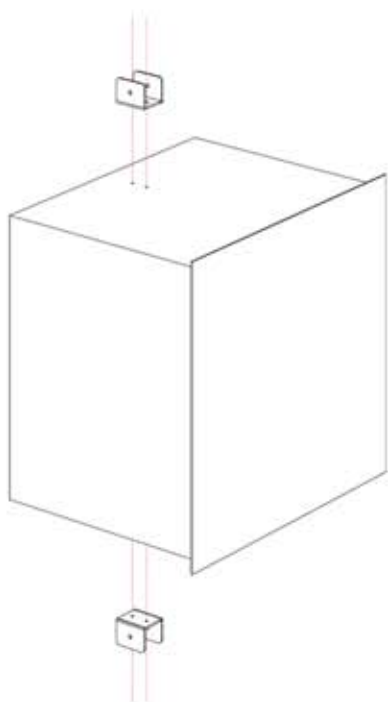
MOD. D



Istruzioni di Montaggio

Assembly Instructions

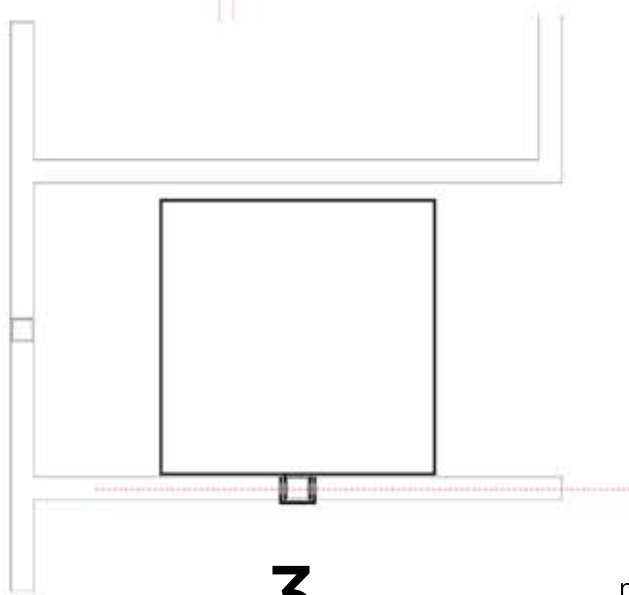
1.



1. Se necessario, per stabilire l'apertura dell'anta (Dx o Sx), smontare dal coperchio del contenitore la "U" di metallo e ri-avvitarla sul lato opposto del contenitore utilizzando le stesse viti.

1. *If necessary, to determine the opening of the door (right or left), remove from the top of the container the "U" and re-screw it on the opposite side using the same screws.*

2.



2. Posizionare il contenitore sul traverso a muro del modulo ANTOLOGIA

2. *Place the container on the beam to the wall of ANTOLOGIA*

3.

3. Fissare in sicurezza il contenitore con la "U" di metallo in dotazione bloccandola con le apposite viti

3. *Safely fix the container with the "U" supplied metal and blocking it with the screws*

ANTOLOGIA_Contenitore

Designer:	Studio 14
Anno Year:	2013
Materiale Materials:	Metallo satinato e verniciato lucio <i>bright laquered stainless metal</i>
Varie Additional:	solo per uso interno <i>indoor use only</i>